

IP-SEI-318C36C9POM32

Monitored Rack kWh PDU, 0U, per outlet kWh metering, 7.2kW, outlets (18)C13 and (6)C19, input plug EN 60309 (1x32A), cord 3m



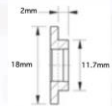
## 037288VIM13- IPSEI318C36OM32

MONITORED PDU

IP-SEI-318C36C9POM32

### SPECIFICATIONS

DIMENSIONS	L x W x D = 1180 x 65 x 52.5 mm (0U) (excl. strain relief, mounting & cable bending radius)
ENCLOSURE	Profile color black, aluminium with stainless steel covers (IP20)
MOUNT	Toolless mount buttons (brackets not included) (distance=800, positions=190, 990mm)
POWER INPUT	single phase 32 A, 230VAC - 50/60Hz
CABLE ENTRY	power entry front-side top
CABLE & PLUG	Power lead (3G6 halogenfree) with CEE plug 3,0m (strain relief height 2,5cm)
CONNECTIVITY	databus: 2 x RJ45   Ethernet: RJ45   sensorport: RJ11   USB
INPUT METERING	volt, ampere, kWh, power factor
METERED OUTLETS	24 times volt, ampere, kWh, power factor
FUSES	2 x thermal breaker 16A (ETA)
DISPLAY	LCD display with backlight and configurable orientation
OUTLETS	18 x IEC 60320 C13 , 6 x IEC 60320 C19



### Summary

- vertical PDU (0 U)
- single phase 32 A
- metered input
- metered outlets
- 24 outlets